



# PPMulator Software Basic Guide for Pro Tools v6.x



## Introduction

This guide will help you to set up Pro Tools so you can monitor the levels of your programme with a standard BBC PPM level meter. PPMulator is a software metering plug-in that can be used as an RTAS plug-in in Pro Tools as well as other host audio editing systems.

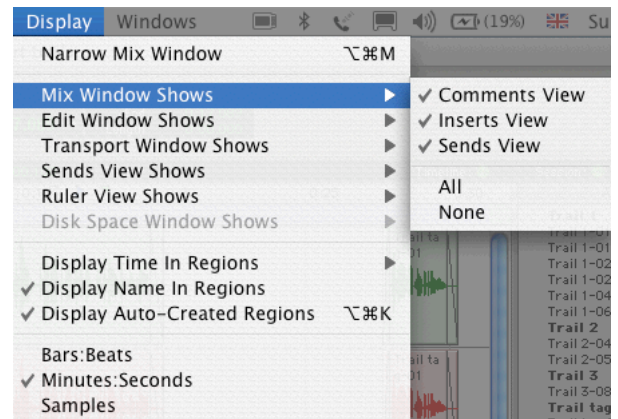
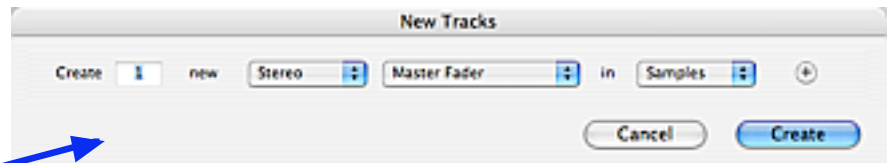
### To use PPMulator in your Pro Tools Session

#### Stage 1

Create your Pro Tools session as normal and add a Stereo Master Fader track From the New Track option from the File Menu.

Open the Mix window, if it is not already open by using the Show Mix in the Windows menu or using **⌘** and **=** (Command & Equals key) keyboard shortcut.

Make sure Insert Points are visible in the Mix window by going into Display menu and Mix Window shows and checking that Inserts View is ticked.



## Stage 2

Select an Insert point on the Master Fader. (The Insert points are the ones with the darker grey background). There are 5 to choose from. For the PPM, choose the bottom insert point so the meter will show the final level after all the other processing like using a Limiter to control the levels.

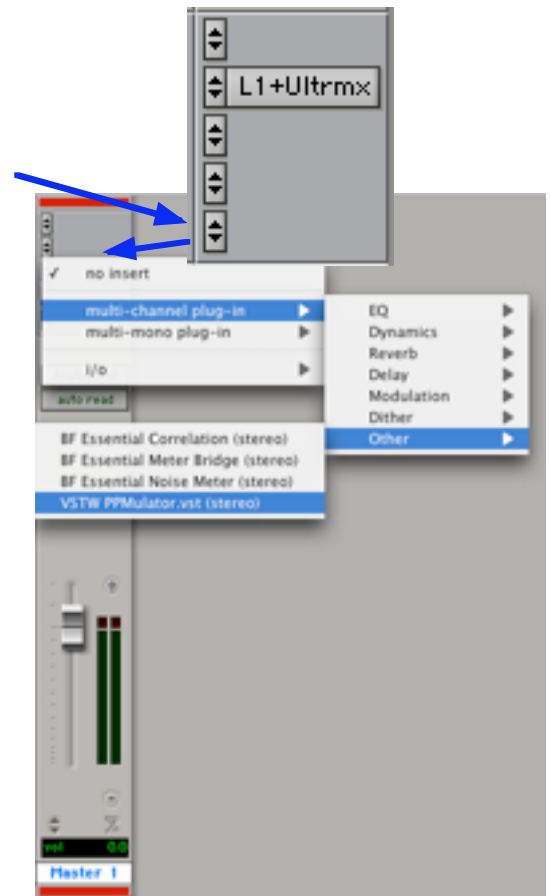
A menu box will pop up and then make the selections in the following order...

Multi-channel plug-in,

Other

VSTW PPMulator.vst.

Click to select VSTW PPMulator.vst and the PPMulator window will open.

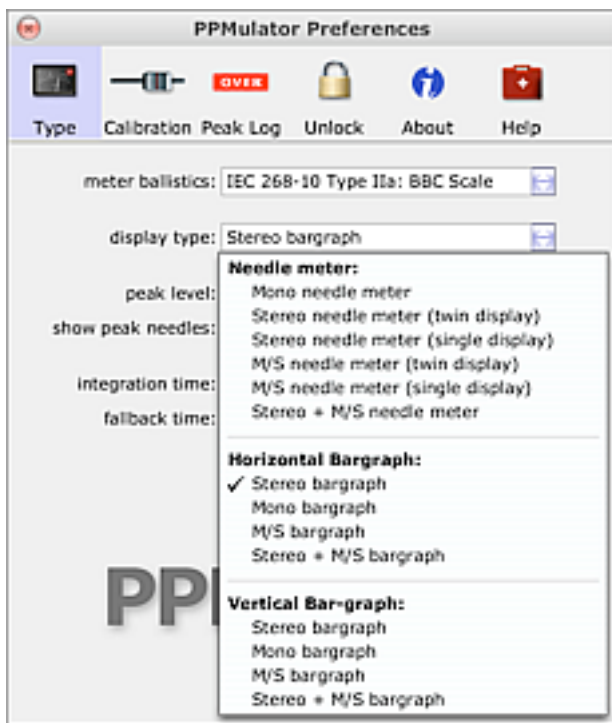


It should open like this as the systems we have configured have been set to default to a horizontal bargraph meter as this is easiest to read on a screen.



If not, or you would prefer to view your PPM in a different format then click on the + icon on the Meter and the PPMulator Preferences window will open.

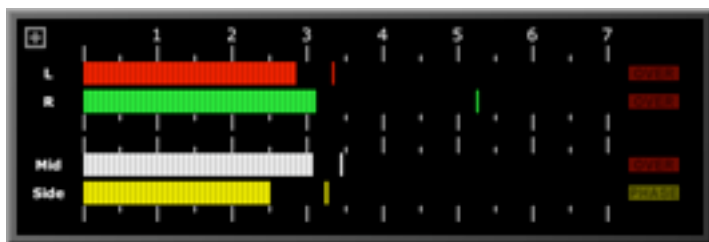




You can select from a wide range of viewing options.

However for viewing on screen we recommend you select one of the Bargraph options as the Needle Meter options can look a little jerky on the screen.

All the other settings you should leave at their default positions to make sure that your PPMulator responds like a genuine BBC PPM level meter.



**Note** the default calibration level setting for PPMulator is correct for Programmes delivered into the VCS playout system, ie PPM 4 = 18 dBfs.

