



OS X Disk Utility Basic Guide



Introduction

Disk Utility is a combination of Disk First Aid & Drive Setup plus more. It basically replaces Anubis or Drive Setup for formatting drives and goes along way to replacing Norton Disk Doctor for disk maintenance.

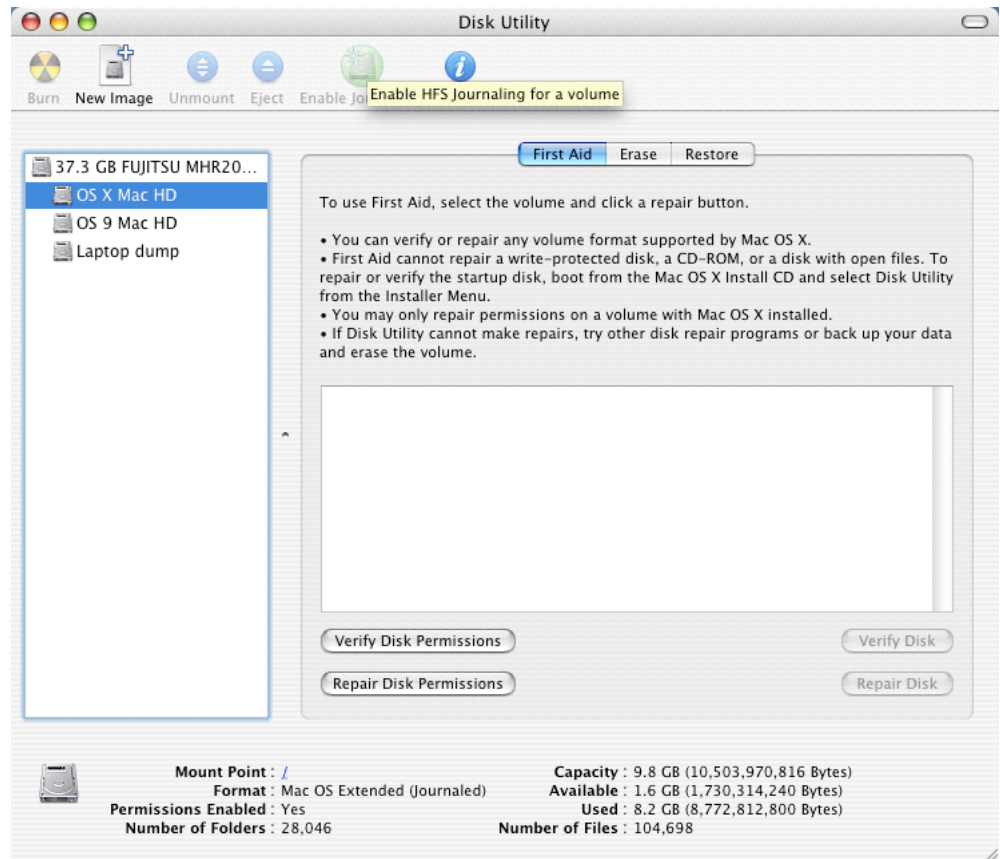
First Aid - Disk repair

You can verify or repair any volume format supported by Mac OS X.

Notes

First Aid cannot repair a write-protected disk, CD-ROM, or a disk with open files. To repair or verify the startup disk, boot from the Mac OS X Install CD and select Disk Utility from the Installer Menu.

You may only repair permissions on a volume with Mac OS X installed.



If Disk Utility cannot make repairs, try other repair programs like DiskWarrior or TechtoolPro or back up your data and erase the volume.

To Repair a Disk

Select the drive in the left hand column and click on First Aid tab

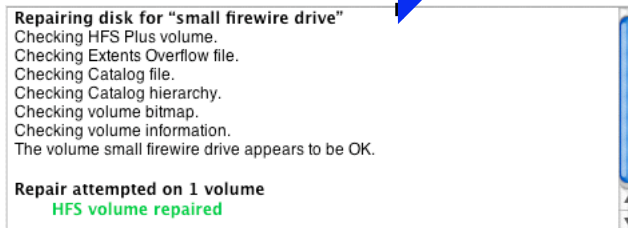
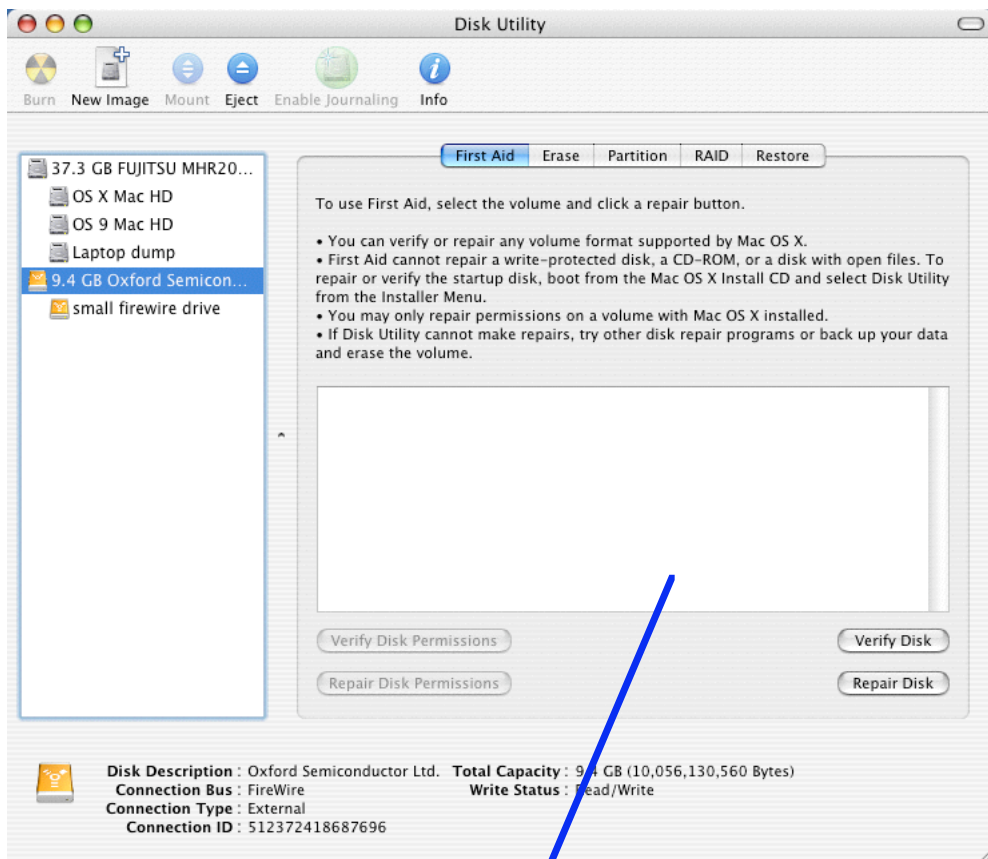
Click on Verify Disk if you want to check the selected disk or volume without repairing it.

or

Click on Repair Disk and Disk Utility will check and attempt to repair the selected disk or volume.

When Disk Utility has finished checking the selected disk or volume then you will get the results in the main dialog box. If it has been unable to repair it Disk Utility will tell you!

You should then try a third party disk repair application like Disk Warrior or TechtoolPro. (We currently don't recommend Norton Utilities for OS X systems)



To Erase (Format) a Disk

Select the disk or volume you want to erase in the left hand column

Select Erase tab

If it is a media drive for Protocols etc. make sure it is as shown Mac OS Extended and you have the Journaled option selected.

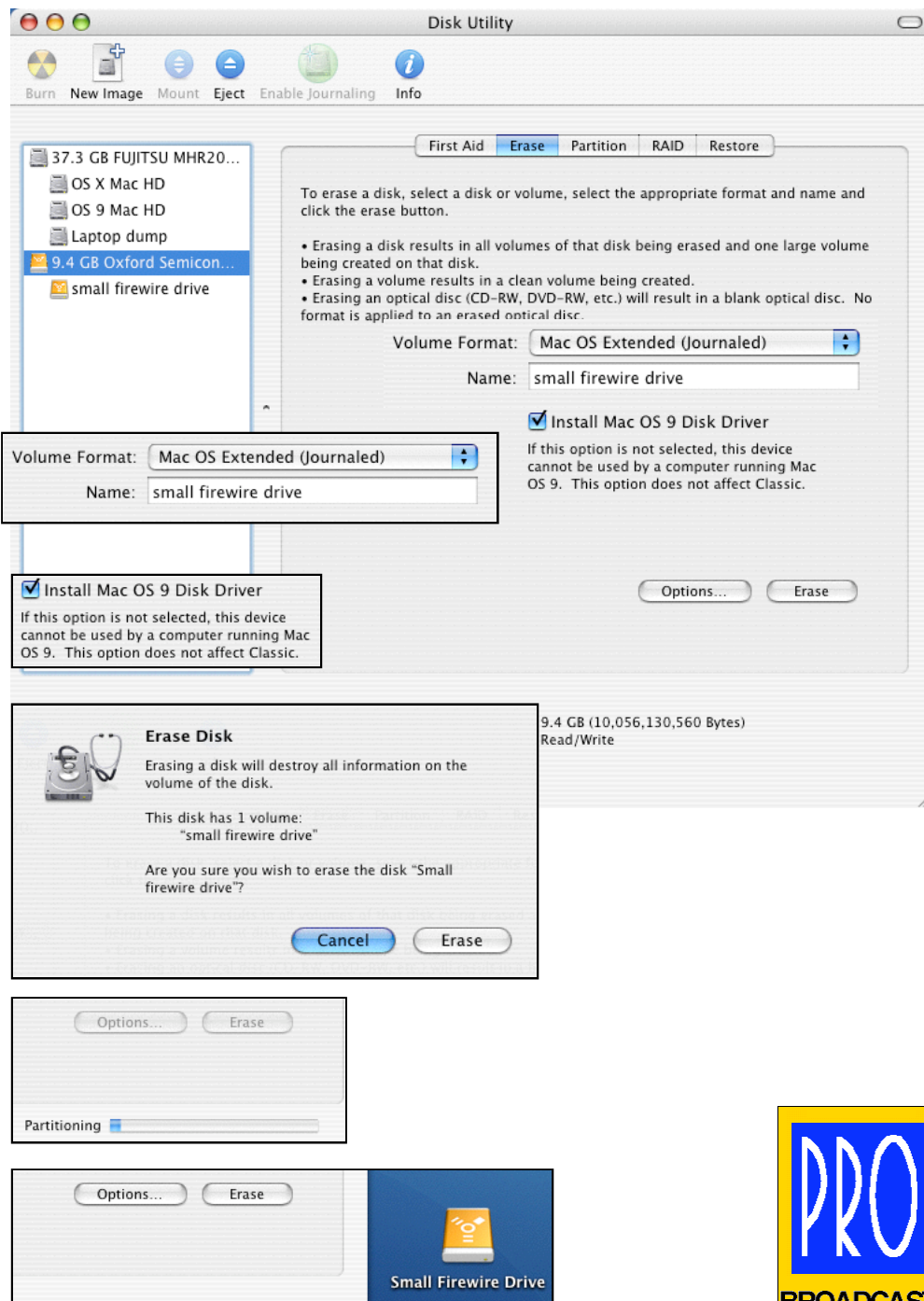
Name your Disk in the name box

Make sure the Mac OS 9 Disk Driver box is checked

Then click the Erase button and you have an option to abort

Click on the Erase button to continue. Then the drive icon will disappear from the Desktop and a Progress bar will appear near the bottom right hand corner of the main window

When Disk Utility has completed the Erase then the drive icon will re - appear with the name you gave it.



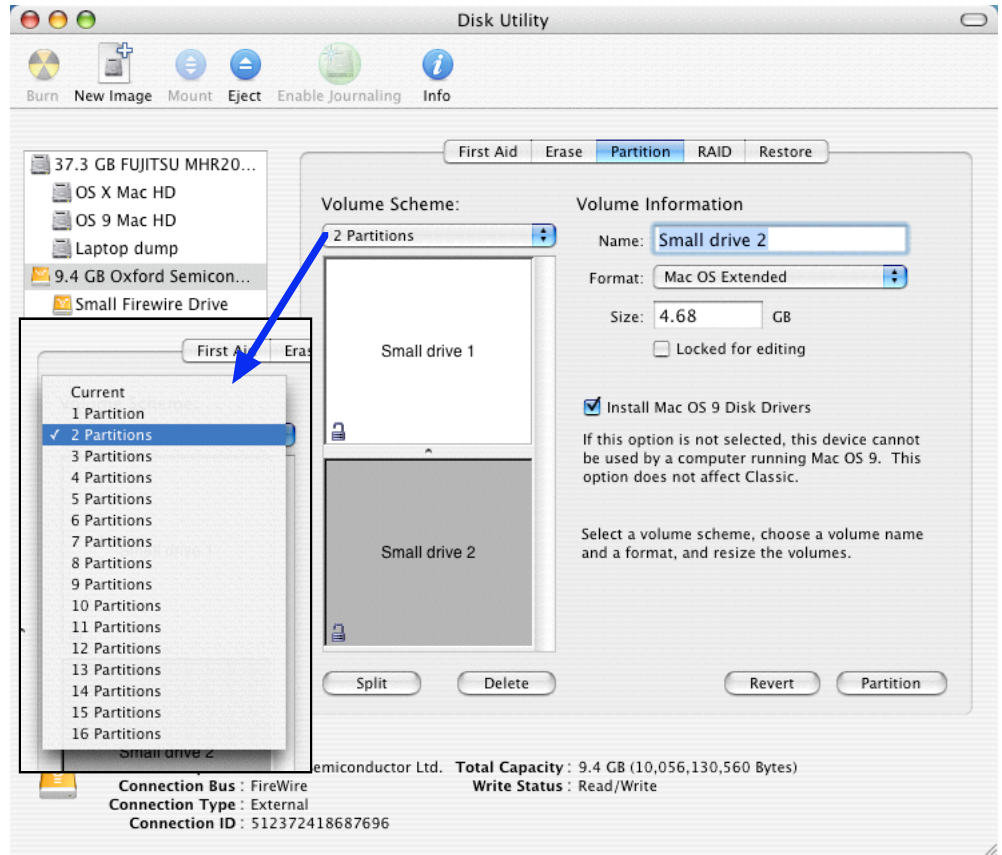
To Partition a Disk

You can choose to partition a drive to divide it up into smaller sections for management & housekeeping

Select the drive in the left hand column and select the Partition tab

You can select how many partitions you want from this pull down menu

As with the basic Erase you can name the Disks, Install Mac OS 9 Disk Drivers, Set Mac OS Extended with or without Journalling (Media drives should be without journalling, StartUp drives should be with Journalling) etc.



Notes

Erasing a disk results in all volumes or partitions on that disk being erased and lost then one single volume being created on that disk.

Erasing a volume results in a clean volume being created.

Erasing an optical disc, like CD-RW, DVD-RW, etc., will result in a blank optical disc. No format will be applied to an erased optical disc.

If your drive is going to be used on OS 9 computers as well as OS X ones then make sure the Mac OS 9 Drivers Installed check box is checked.

Only use Mac OS Extended for StartUp and Protocols related drives.

Only set your Startup Disk to Extended & Journalised. All other Protocols drives should be set to Mac OS Extended and not to Journalised.

